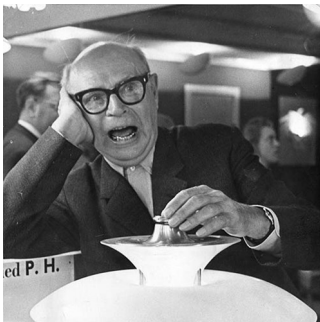


PH 4½-3½ Glass Table

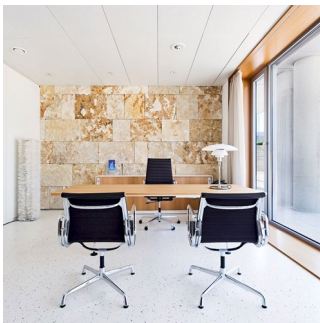
PH4½-3½-T / 1x15W A-19/IF medium / 120V / High lustre chrome plated / - / - / 5844901253

The fixture is designed based on the principle of a reflective three-shade system, which directs the majority of the light downwards. The shades are made of hand blown opal three-layer glass, which is glossy on top and sandblasted matte on the underside, giving a soft and diffused light distribution.

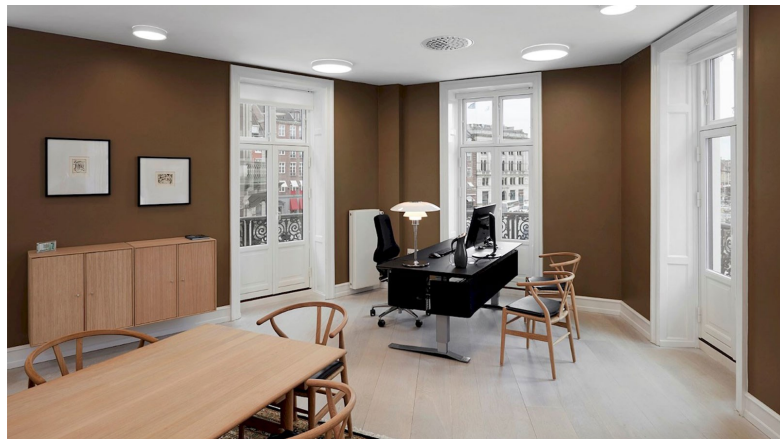


Poul Henningsen

Poul Henningsen was born in Copenhagen by the famous Danish writer Agnes Henningsen. He never graduated as an architect, but studied at The Technical School at Frederiksberg, Denmark from 1911-14, and then at Technical College in Copenhagen from 1914-17.



American Heart Institute



Sydbank

**louis
poulsen**

Design to Shape Light

louispoulsen.com

Product info

Mounting

Cord type: Black. Cord length: 9'. Switch: On/off switch on the base.

Finish

High lustre chrome plated. White opal glass.

Materials

Base: High lustre chrome plated, spun brass. Shades: Hand blown white opal glass. Anti-glare ring: Purple, spun aluminum. Top plate: High lustre chrome plated, spun brass. Stem: High lustre chrome plated, steel.

Sizes and weight

Width x Height x Length (in.) | 17.7 x 21.7 x 17.7 Max 22.0 lbs

Compliance

cULus, Dry location.

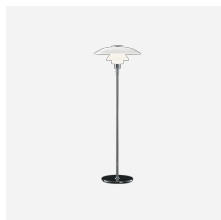
Light source

1x15W A-19/IF medium

Product family



PH 4½-4 Glass Pendant



PH 4½-3½ Glass Floor



Light distribution diagrams

Cartesian|soluxPolar

□ □ □

Spare parts & accessories

Product	Variant number
PH 4½-3½ GLASS TABLE/FLOOR, MIDDLE SHADE	5744610612
PH 4½-3½ GLASS TABLE/FLOOR, LOWER SHADE	5744610625
PH 4½-3½ GLASS TABLE/FLOOR, TOPSHADE ACC	5744610722

Data specifications

Length	17.7	Width	17.7
Height	21.7	Built-in Height	-
IP class	20	Class	II
Net Weight	22.0	Min. Dim Level (%)	-
Standby (W)	-	Power Factor (P = 100 % / P = 50 %)	-
Inrush Current	-	Surges	-
Light source	1x15W A-19/IF medium	Kelvin	-
CRI	-	SDCM	-
Lumen	-	Watt	-
Efficacy	-	UGR Transversal / Axial	-
L80B50 (hours)	-	L80B10 (hours)	-