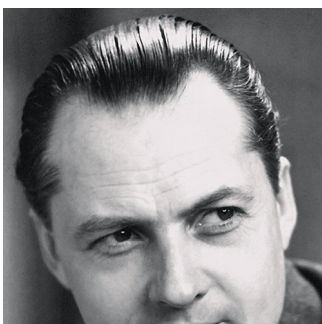


VL Ring Crown 1

1x40W E26 J / Brass/glossy opal glass / 5741925423

The pendant emits light directed primarily downwards.
The opal glass provides a comfortable and uniform illumination of the area around the fixture.



Vilhelm Lauritzen

Vilhelm Lauritzen (1894–1984) is one of the most significant architects in the history of Denmark; he was the trail-blazing figurehead of Danish functionalism. A number of his buildings – Nørrebro Theatre (1931–32), Daells Varehus department store (1928–35), Radiohuset (1936–41) and the first airport built in Kastrup (1937–39) – represented the concentrated essence of contemporary life.



**Set location -
The Silo**



Product info

Finish

Glossy, handblown white opal glass. Satin polished brass, untreated.

Materials

Shades: Handblown, 3-layered, polished opal glass. Suspension: Untreated brass, will patinate.

Mounting

Shades: Handblown, 3-layered, polished opal glass. Suspension: Untreated brass, will patinate.

Sizes and weight

Width x Height x Length (in.) | 7.5 x 13.5 x 7.5 Max 3.6 lbs

Compliance

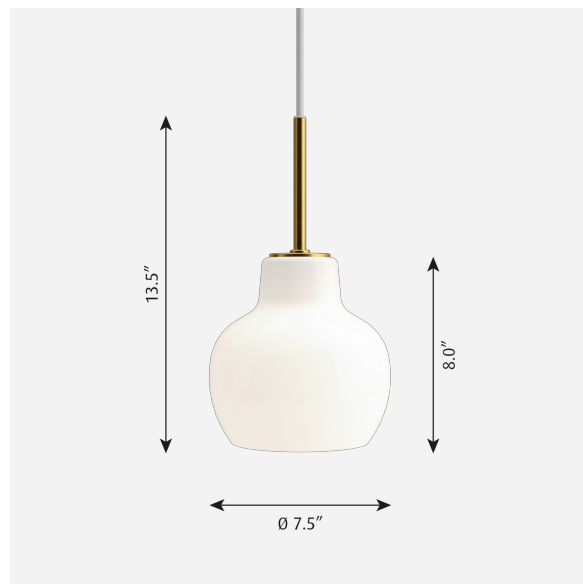
Compliance: cULus, Dry location.

Light source

1x40W E26 J

Information

Please note that the brass surfaces are untreated. This means that the surface will change over time and develop a patina.



Data specifications

BUG Rating	-	Built-in Height	-
Class	-	CRI	-
Efficacy	-	Height	13.5
IK class	-	Inrush Current	-
IP class	20	Kelvin	-
L80B10 (hours)	-	L80B50 (hours)	-
Length	7.5	Light source	1x40W E26 J
Lumen	-	Min. Dim Level (%)	-
Net Weight	3.6	Power Factor (P = 100 % / P = 50 %)	-
SDCM	-	Standby (W)	-
Surges	-	UGR Transversal / Axial	-
Watt	-	Width	7.5
Wind Load per ft2	-		