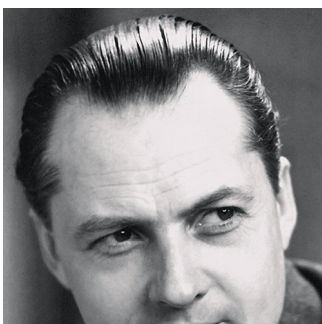
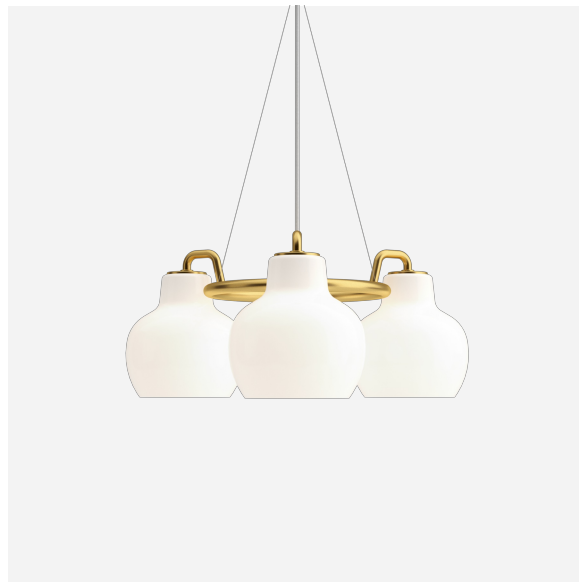


# VL Ring Crown 3-5-7

3 / Brass/glossy opal glass / 5741925449

The pendant emits light directed primarily downwards.  
The opal glass provides a comfortable and uniform illumination of the area around the fixture.



## Vilhelm Lauritzen

Vilhelm Lauritzen (1894–1984) is one of the most significant architects in the history of Denmark; he was the trail-blazing figurehead of Danish functionalism. A number of his buildings – Nørrebro Theatre (1931–32), Daells Varehus department store (1928–35), Radiohuset (1936–41) and the first airport built in Kastrup (1937–39) – represented the concentrated essence of contemporary life.



Set location - The Silo

**louis  
poulsen**

Design to Shape Light

[louispoulsen.com](http://louispoulsen.com)

## Product info

### Finish

Glossy, handblown white opal glass. Satin polished brass, untreated.

### Materials

Shades: Handblown, 3-layered, polished opal glass. Suspension: Untreated brass, will patinate.

### Mounting

Mounting: Suspension type: 3x stainless steel aircraft cables. Suspension length: 12'. Canopy: Brass. Cord type: 3-conductors, 18 AWG white braided fabric covered cord. Cord length: 12'.

### Sizes and weight

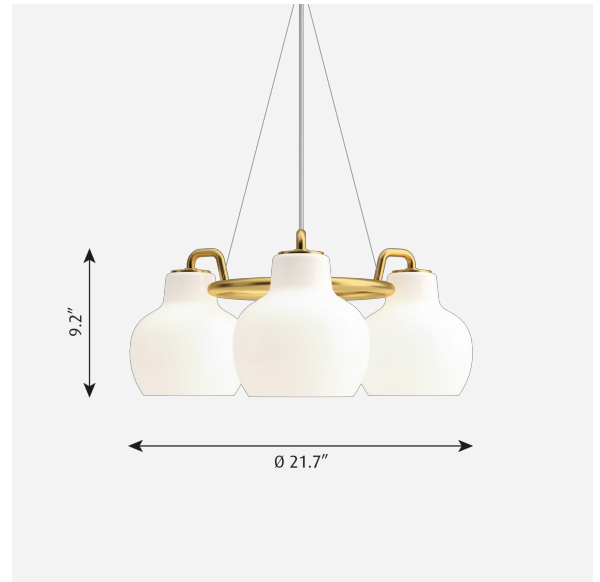
Width x Height x Length (in.) | 21.7 x 9.2 x 21.7 Max 12.0 lbs | 27.2 x 9.2 x 27.2 Max 17.1 lbs | 35.2 x 9.2 x 35.2 Max 22.3 lbs

### Compliance

Compliance: cULus, Dry location.

### Information

Please note that the brass surfaces are untreated. This means that the surface will change over time and develop a patina. The total weight of the fixtures are calculated with the average weight of the glass (1.5 lbs.). They vary from 1.3 to 1.8 lbs.



## Data specifications

BUG Rating	-	Built-in Height	-
Class	-	CRI	-
Efficacy	-	Height	<b>9.2</b>
IK class	-	Inrush Current	-
IP class	<b>20</b>	Kelvin	-
L80B10 (hours)	-	L80B50 (hours)	-
Length	<b>21.7</b>	Light source	-
Lumen	-	Min. Dim Level (%)	-
Net Weight	<b>11.964</b>	Power Factor (P = 100 % / P = 50 %)	-
SDCM	-	Standby (W)	-
Surges	-	UGR Transversal / Axial	-
Watt	-	Width	<b>21.7</b>
Wind Load per ft2	-		