

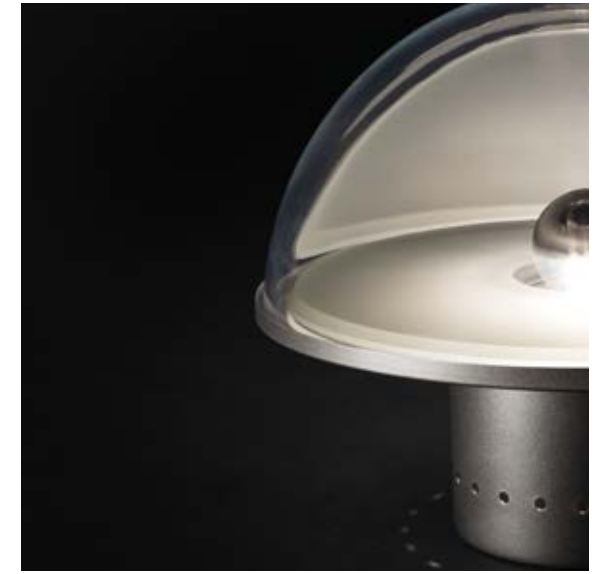
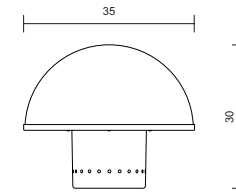
SIDERA

DESIGNED BY **ALBERTO ROSSELLI** • 1969



DETAILS

Type: table lamp
Materials: iron / glass
Weight: 5,00 kg
Insulation: class II / IP20
Bulbs: 1xLED max 8W E27-220V / E26-110V



FINISHINGS



TSI300-2244
Manganese
Crystal



TSI300-3344
Orange
Crystal



TSI300-3944
Green
Crystal