



Tappeto Sofo

made with
cc-tapis

since [1968] 2023

Poltrona
info@poltrona.it
www.poltrona.it

designer

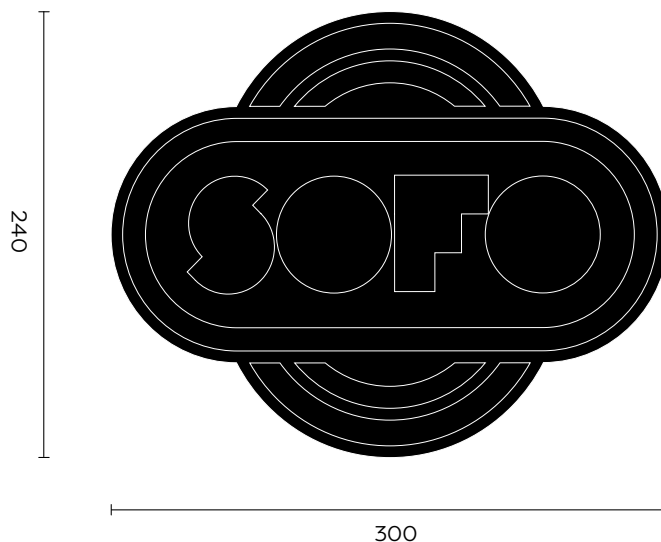
Superstudio

description

Dedicated to the homonymous hyperpop modular system by Superstudio, the Sofo rug is the result of research in the archives of Centro Studi Poltrona. Its shape is none other than the marking, designed in the 1960s by the same members of Superstudio, which characterized the product's shipping packages. A composition of concentric circles with, in the central part, typographic shapes of a geometric nature declaring the name of the product. The rug is available in two variants that take up the typical colour scores of the sofa: verosa and rosancio. Made by Centro Studi Poltrona per il Design with cc-tapis.

typology dimension

Rug
300 x 240[w] cm (± 2%)





materials

Hand-tafted wool



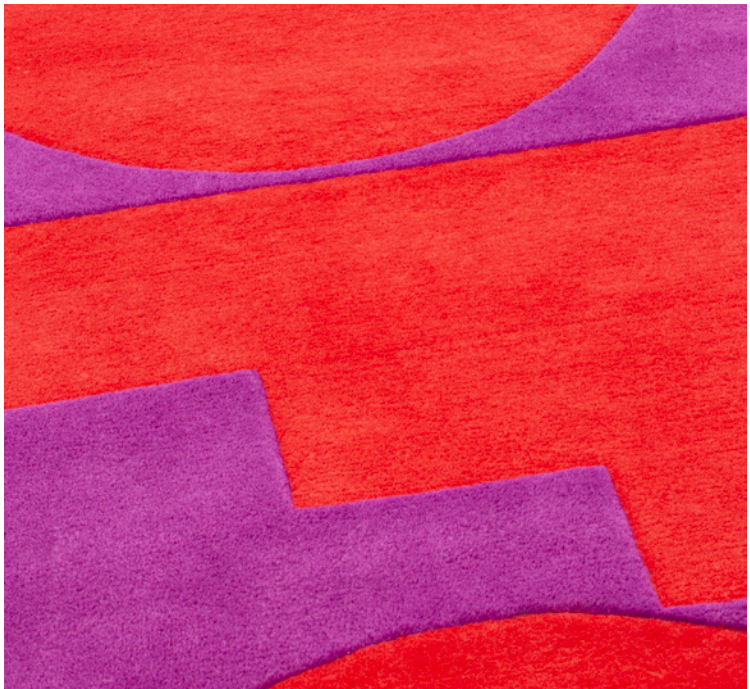
colors

Green—pink /
Pink—orange

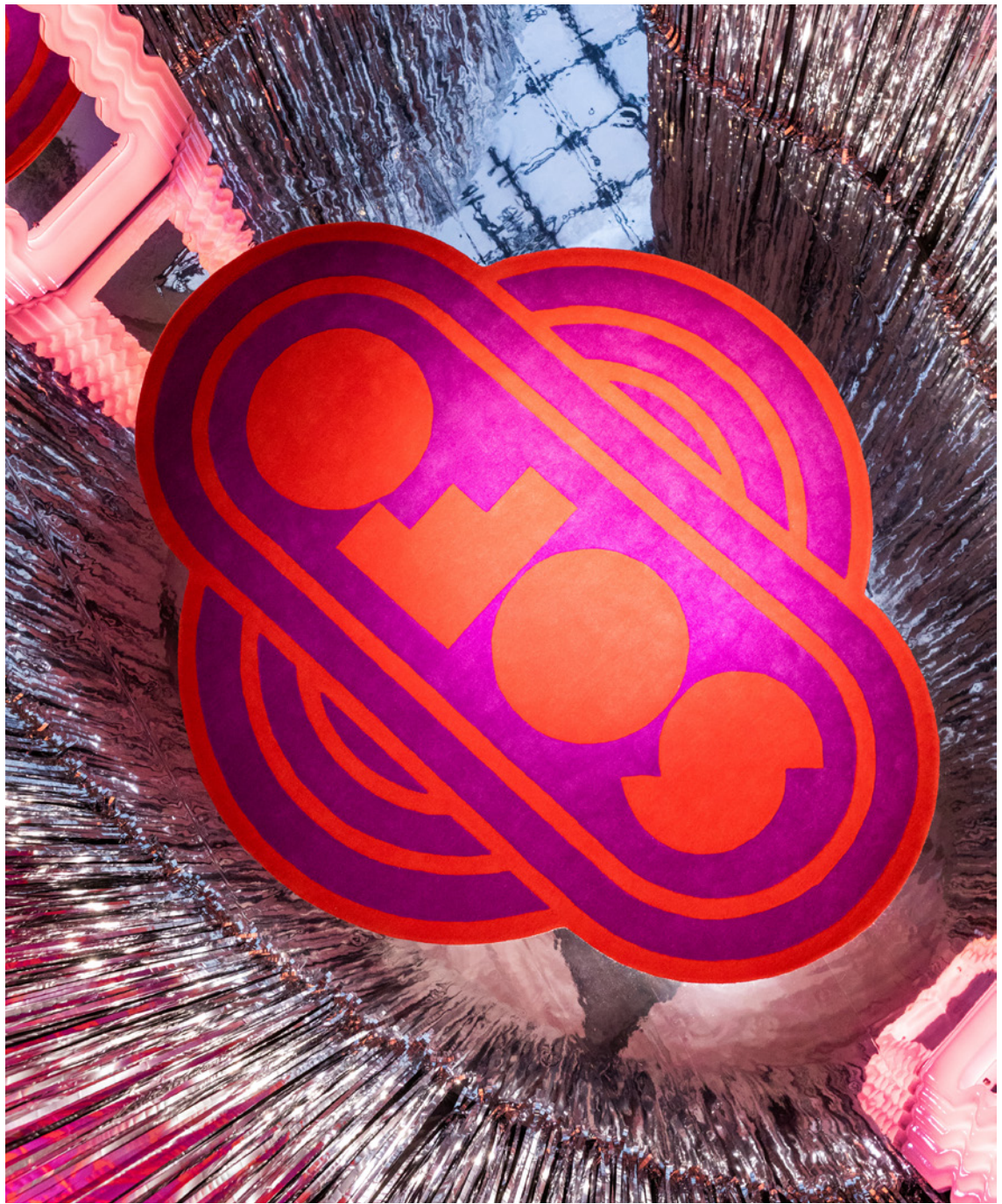
Verosa



Rosancio



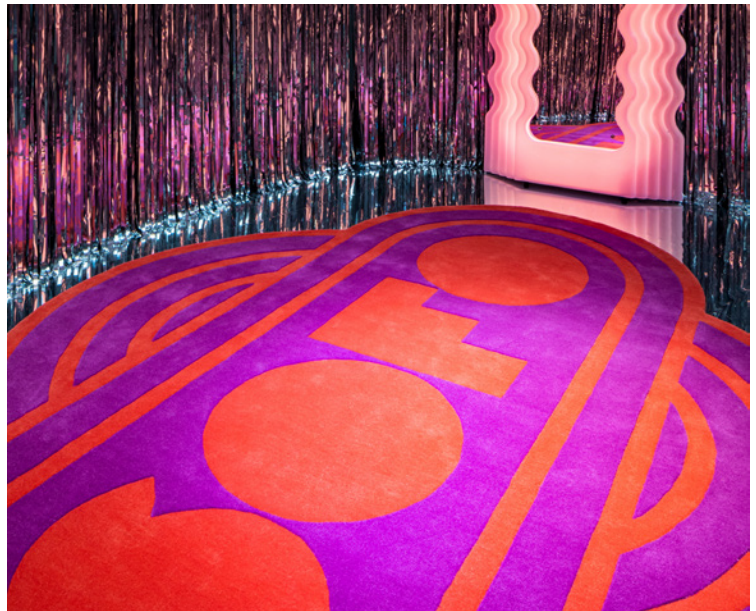




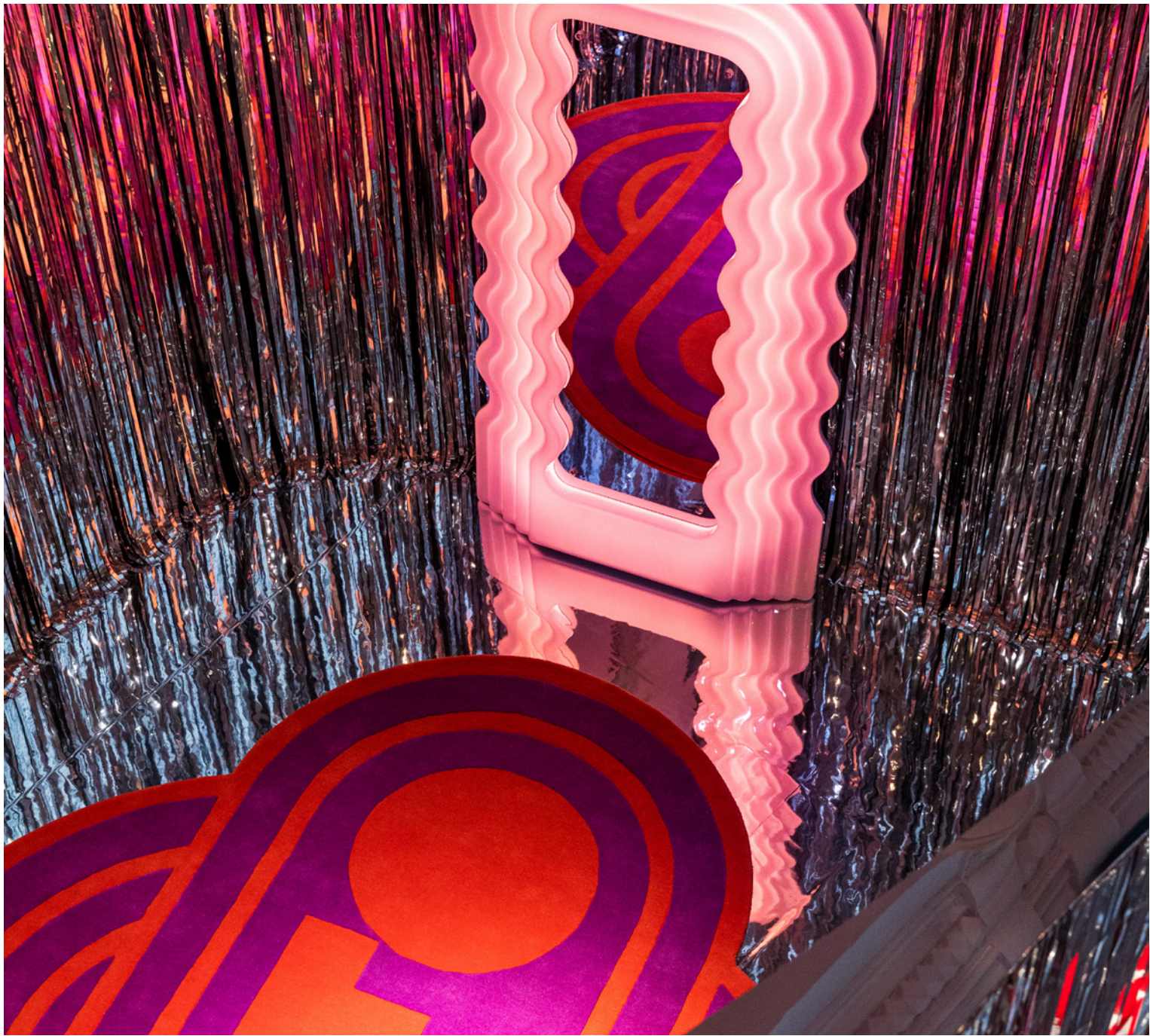
↗ *Ultrafavola, Salone del mobile, Milano. 2023*



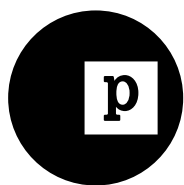
↗ *Ultrafavola, Salone del mobile, Milano. 2023*



↗ *Ultrafavola, Salone del mobile, Milano. 2023*



↯ *Ultrafavola, Salone del mobile, Milano. 2023*



Poltrona
info@poltrona.it
www.poltrona.it

image rights

*Any rights holder not mentioned may contact the
Poltrona team to be traced and mentioned correctly.*

poltrona