



## **Moby**

**Design** Birgitte Due Madsen & Jonas Trampedach

**Year** 2015

Moby is an extraordinarily sculptural table lamp. Filled with intriguing contrasts, it balances a soft and comforting light with a striking, futuristic design. The void in the main element creates a small cap in which the light source is enclosed. When Moby is on, the soft light unfolds and illuminates the cavity, immediately drawing the attention to the organic curves.

In 2016, Birgitte Due Madsen and Jonas Trampedach received the prestigious Silver Hetsch medal for Moby, the highest recognition available from the Danish Art and Crafts Movement of 1879. The two designers run separate studios in Copenhagen, but their collective fondness of the soft, delicate plaster material, typically used for fine art and prototypes, led to this collaboration and the creation of Moby. The lamp was originally cast in plaster, but has now been translated into a durable matte acrylic material with a similar silky-smooth expression.

Moby is made from Acovi acrylic and uses an integrated LED light source with an on-cord dimmer.

Height: 20cm (7,9") / Width: 24,2cm (9,5") / Depth: 9,5cm (3,7")



## **Birgitte Due Madsen**

Birgitte Due Madsen is an artist and designer living and working in Copenhagen. Her portfolio ranges from handmade, custom and serial furniture to sculptures and unique pieces. Through an autonomous and unpretentious approach, she integrates materials such as gypsum, resin, concrete or stone and uses various techniques to achieve her design ideals. Her works are characterized by a subtle, poetic colour scheme, tactile textures and a strict, playful geometry.



## **Jonas Trampedach**

Designer Jonas Trampedach's work is based on clear, legible principles, often with a sculptural quality. While the majority of his projects can be defined as industrial design, many of them also incorporate elements of craft. His Copenhagen studio was established in 2010 and centres around products, furniture and lighting. The studio has a flexible and varied approach to materials, processes and techniques, and the works span from mass production design to limited editions and unique pieces.



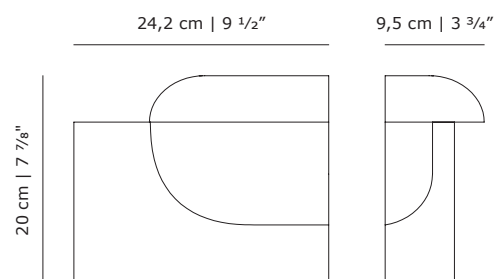
## Moby

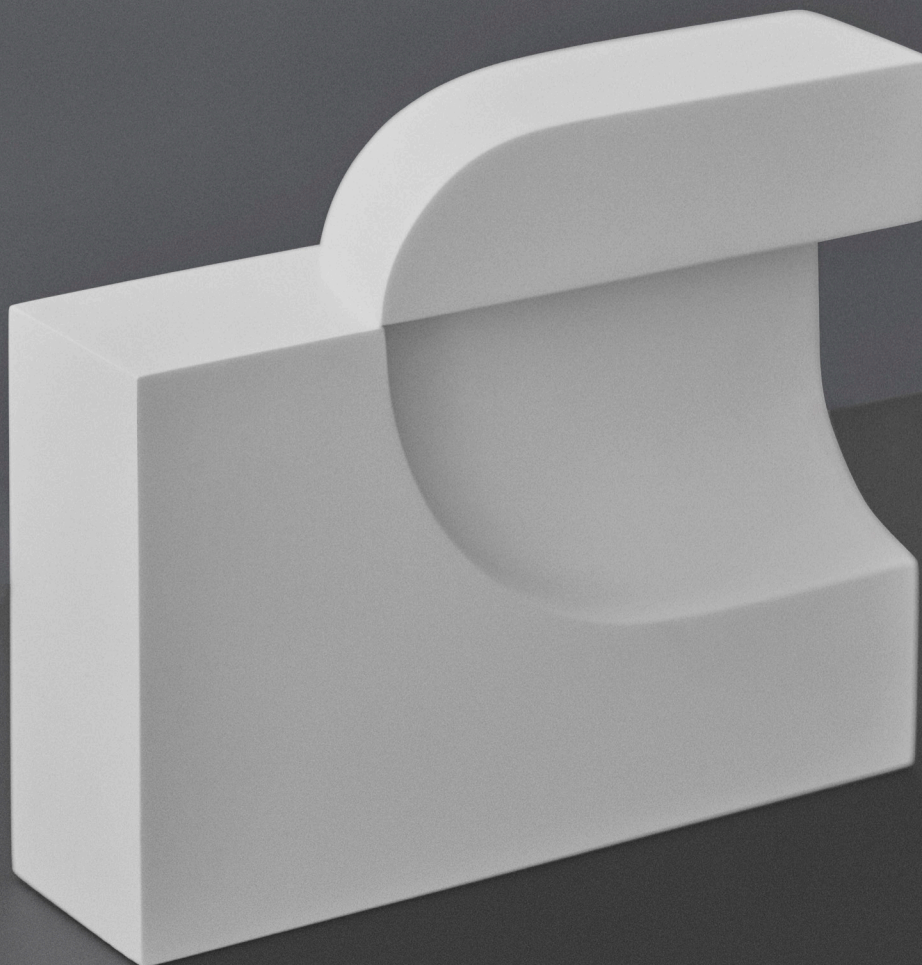
### PRODUCT DATA

Design	Birgitte Due Madsen & Jonas Trampedach. 2015
Product type	Table lamp
Environment	Indoor
Materials	Acovi acrylic
Cord	2,7m white rubber cord with dimmer
Light source	6W 2.700K LED CRI>90 (built-in)
Power supply	Switching 230V/110V (included) EU/UK/AU/US/JP/CN plugs included
Certifications	CE

### DELIVERY

Lead time	Stock (if backorder: 12 weeks)
-----------	--------------------------------





Founded on rebellious curiosity and a passion for the unique, Karakter is a bit out of the ordinary. Rooted in the proud Danish design tradition, but always maintaining an international outlook, Karakter presents a striking portfolio of furniture, lighting and objects from designers who have already written the history of design to those who are aspiring to write the future. All designers collaborating with Karakter are curated for their ideas and creativity and shared by all of them is an inspiring level of curiosity and an uncompromising take on their work. Boasting both the relevant and honest, the beautiful, the playful and the expressive, all designs have a clear, undeniable character. Ready to spark curiosity and start conversations.

#### Head Office

Karakter  
Gammel Lundtoftevej 1C  
2800 Kongens Lyngby  
Denmark

T +45 38 41 41 31  
@karaktercopenhagen  
info@karakter-copenhagen.com

#### Showroom - Copenhagen

Karakter  
Frederiksgade 1 - 2nd floor  
1265 København  
Denmark

T +45 20 30 53 53

#### Showroom - Paris

Karakter  
242 Bis bd st Germain  
75007 Paris  
France

T +33 01 43 25 48 05  
karakterparis@cassina.com

#### Karakter Corner - Milan

Cassina Showroom  
Via Durini, 16  
20122 Milano  
Italy

T +39 02 76 02 07 45

